



Briefing

Parc Ynni Nant Mithil Energy Park



About us

A sustainable world, now and for future generations

Bute Energy is headquartered in and focused on Wales. We are seeking to deliver a portfolio of energy parks, with suitable infrastructure, using the latest proven technology to maximise onshore renewable power generation opportunities in Wales.

Our Vision

Our energy parks will ensure low-cost renewable energy can contribute towards the wider economic renewal and invest in the revival of rural Wales.

Our Mission

Bute Energy's mission is to help address the climate crisis by unlocking Wales' potential for onshore renewable power generation and bring benefits to local communities where energy parks are created.

Our Commitment

Wherever possible, our processes will aim to reduce the environmental impact and in turn support the local economies which will benefit from our energy parks.

Bute is committed to delivering and supporting community projects which will provide an economic catalyst in communities that require direct investment to encourage growth.



Introduction

Helping to address the climate emergency by unlocking potential for onshore renewable power generation and bringing investment to local communities.

Welcome to the Nant Mithil Energy Park

Nant Mithil Energy Park is a multi-technology energy project.

Nant Mithil is located in an area with an excellent wind resource that can be harnessed to bring benefits in terms of tackling climate change and bringing investment to local communities.

The previous two years have been spent undertaking feasibility and survey work at the site to inform the next stages of the project. Further detailed assessment work will continue up until the point any planning application is submitted.

We will soon be hosting a round of community consultation days. We appreciate that sometimes it is easier to ask a question one-on-one, via email, in person or over the phone. With this in mind, we want to make ourselves available to answer any of the questions you may have about the project or any of the surrounding issues including the community fund.

Latest project news:

We will shortly be submitting an Environmental Impact Assessment (EIA) Scoping Direction request to the Planning and Environment Decisions Wales ('PEDW') section of Welsh Government to agree how the project should be assessed. This should take approximately 2 months to be provided.

We also be submitting a planning application to Powys County Council to erect a temporary meteorological mast to measure wind speeds more accurately at the site for a period of 3 years. This should also take approximately 2 months to be decided.

The project

Nant Mithil Energy Park

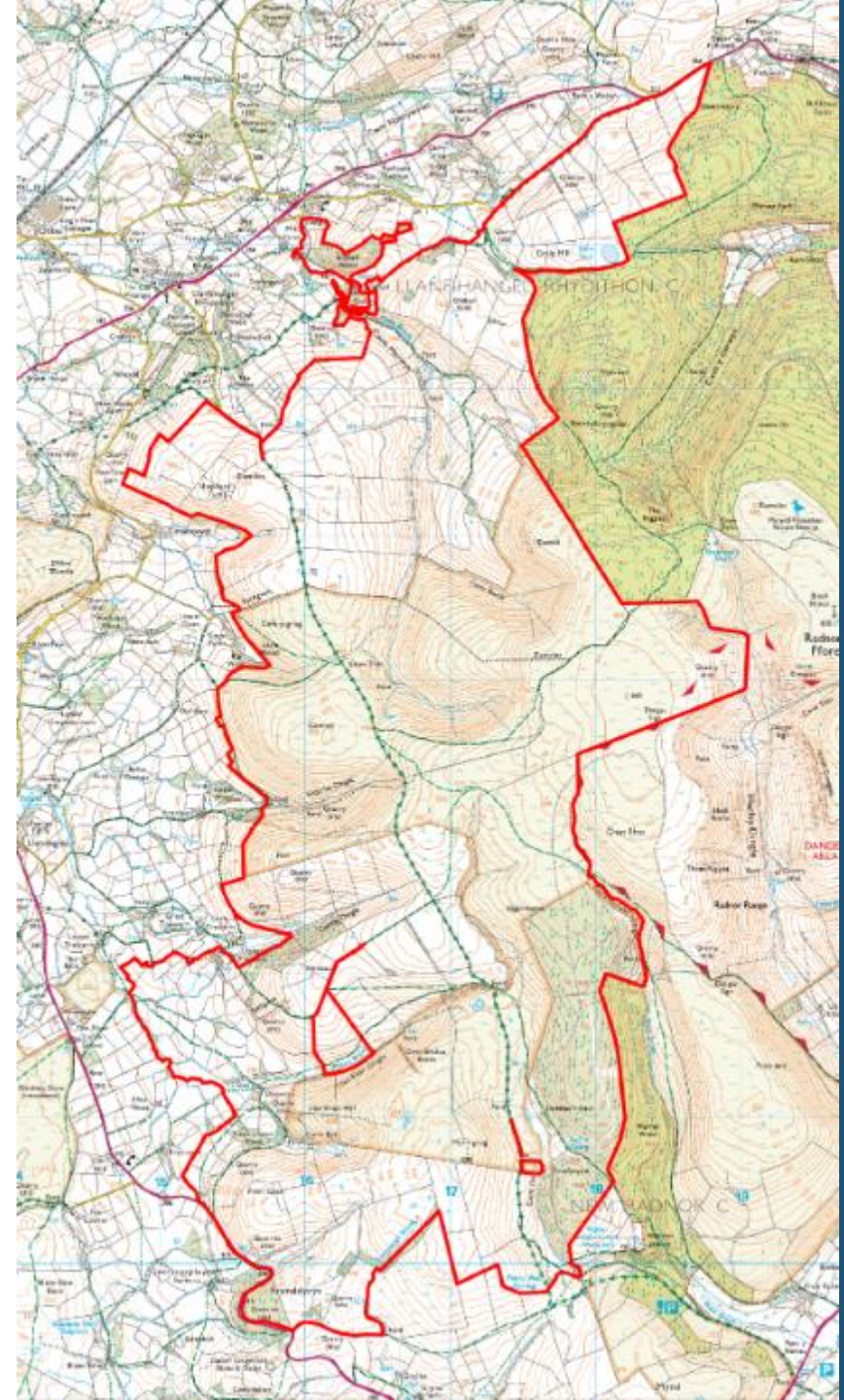
The site is located approximately 9 km east of Llandrindod Wells in the Radnorshire area of eastern Powys, in an upland area known as Radnor Forest (or Fforest Glud). Part of the site is within a Pre-Assessed Area for Wind Energy in Future Wales: The National Plan 2040.

Nant Mithil Energy Park is a multi-technology energy project with great potential for onshore wind, in particular. Solar energy and battery technology are also being considered.

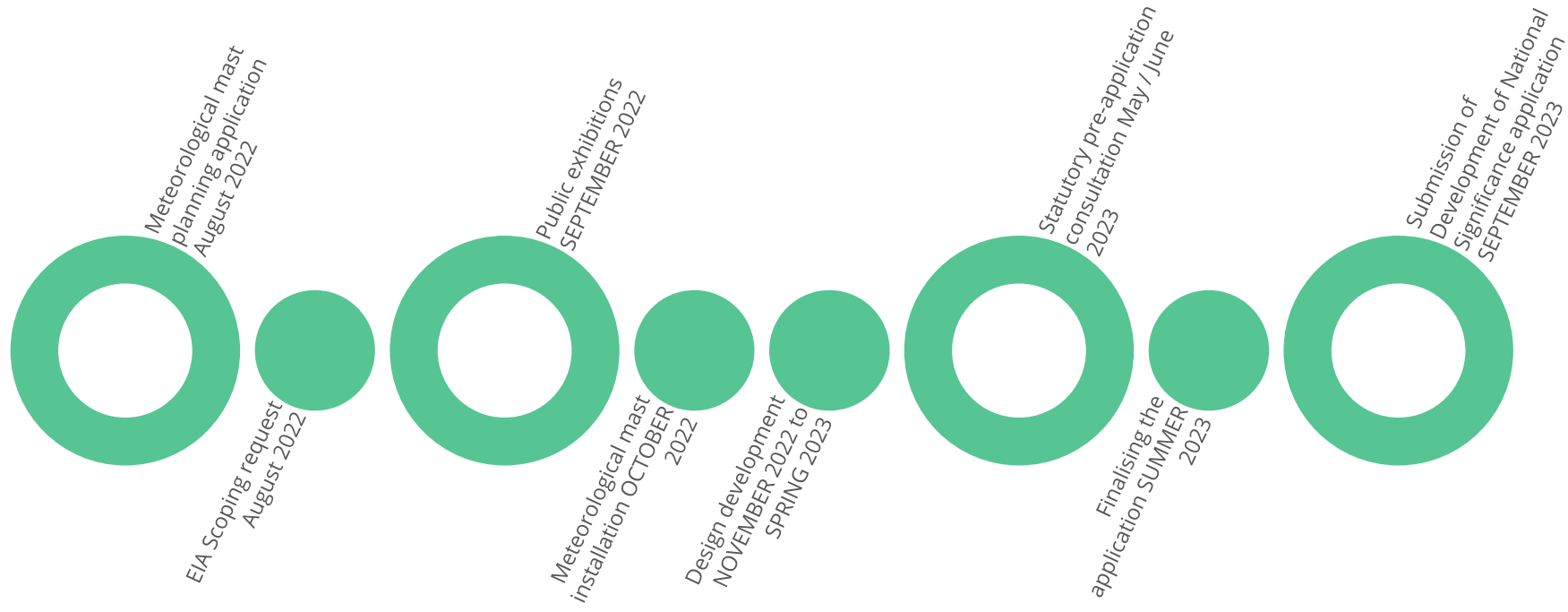
We are considering the latest efficient modern technology at Nant Mithil. This would be the most efficient way of generating electricity in this location, meaning fewer turbines and no public subsidies being required.

At present, the project will also include a new crossing over the River Wye south of Builth Wells in order to deliver turbine blades to the site, though access options are being constantly reviewed and may be subject to change.

The project will be designed to respond to local environmental constraints and we welcome feedback from the community and consultees through the consultation process to ensure the project is as well designed as it can be and maximise investment in the local area.



Project timeline



Community investment

Our approach to renewable energy development and deployment focuses on involving ourselves in the local communities in which our projects are located, helping to bring investment to the areas around the site.

The community investment fund for Nant Mithil proposed equates to approximately £5,000 per megawatt of installed capacity per annum.

Based on current designs, this could mean an annual fund in the region of £1.2 million every year for the 40 years operational life of the project to be invested into the local communities surrounding the Nant Mithil site.

Over the coming months we will be working with community partners to build a framework for delivery of a package of investment to the communities surrounding the project.

This will have the simple goal of identifying and contributing to community interests, with a lasting legacy that enhances rural life through opportunities for modern sustainable rural living and educational opportunities throughout the lifetime of the project and for future generations.

Contact us

Contact Bute Energy:

Bute Energy Ltd
Hodge House
Guildhall Place
Cardiff
CF10 1DY

T: 0292 167 9750

E: dafydd.williams@bute.energy